



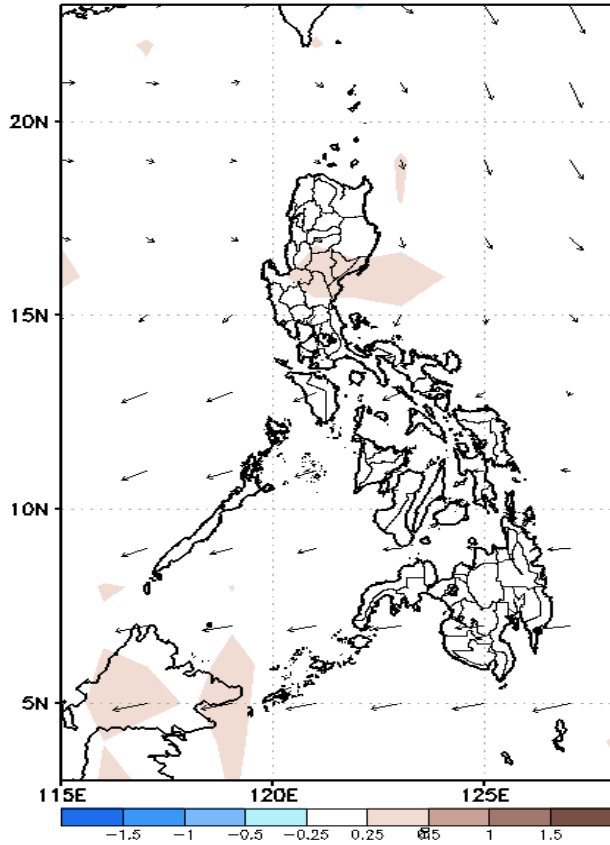
# Week 1 & Week 2 Forecast for the Philippines using GEFS Model



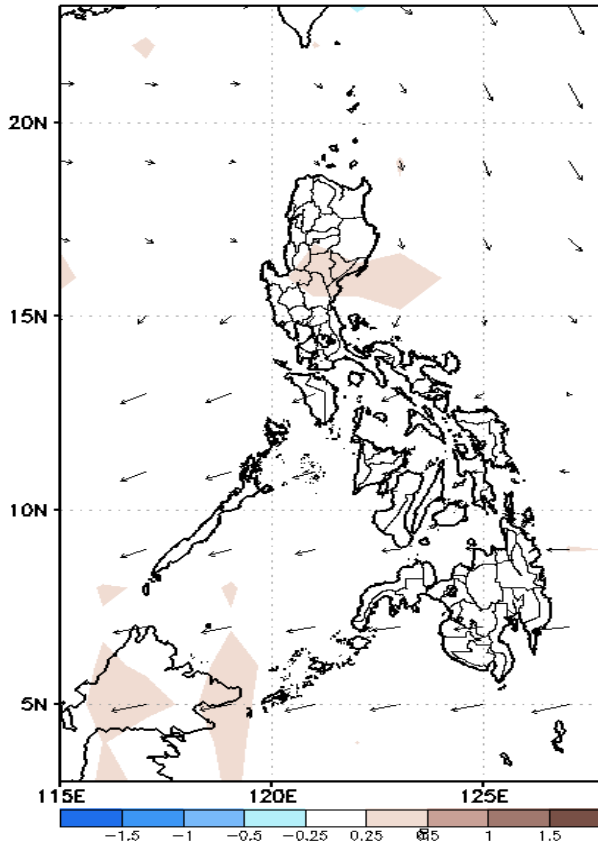
# GEFS Week-1 Forecasts: Divergence & Wind Anomaly

Week 1: Sep 27- Oct 03, 2021

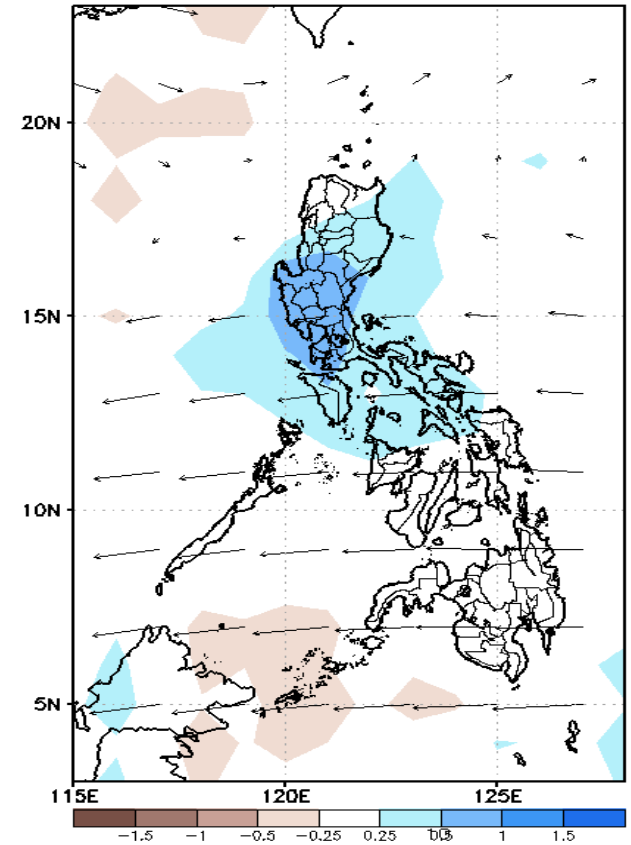
GEFS Week-1 850-hPa Divergence and Wind Anom  
Valid: 20210927 - 20211003



GEFS Week-1 700-hPa Divergence and Wind Anom  
Valid: 20210927 - 20211003



GEFS Week-1 200-hPa Divergence and Wind Anom  
Valid: 20210927 - 20211003

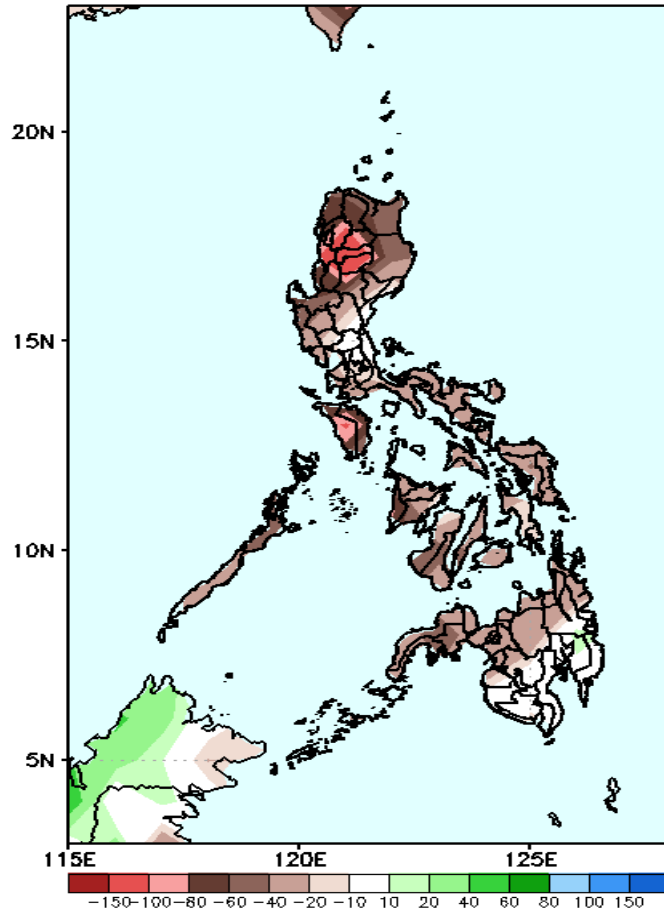


Upper and low level Divergence suggest likelihood of light precipitation in most parts of Luzon. Easterlies affecting the rest of the country attributing to light and moderate rains due to thunderstorms during the forecast period.

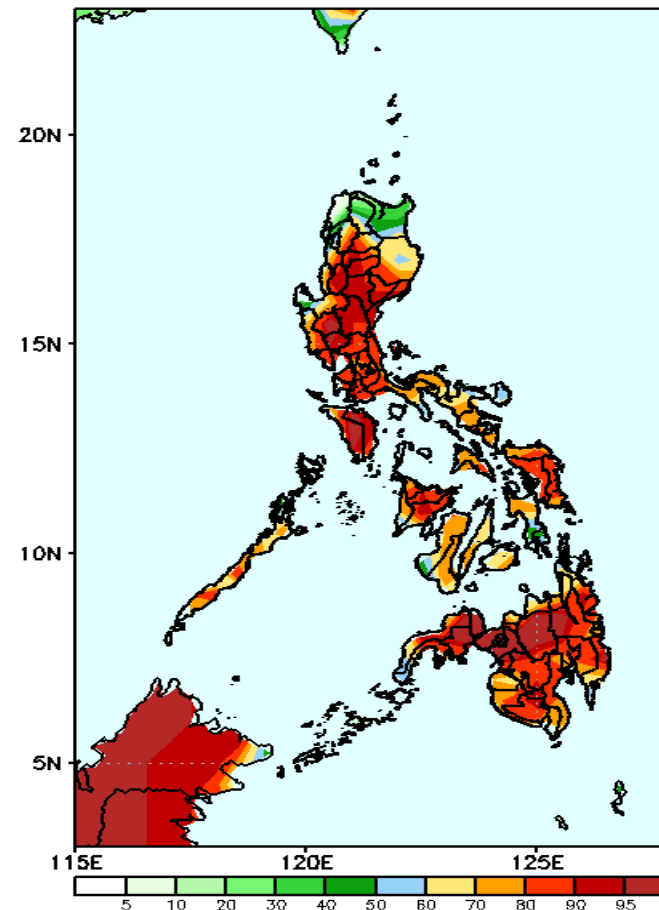
# Precipitation Anomaly and Exceedance Probability > 25/50 mm

Week 1: Sep 27- Oct 03, 2021

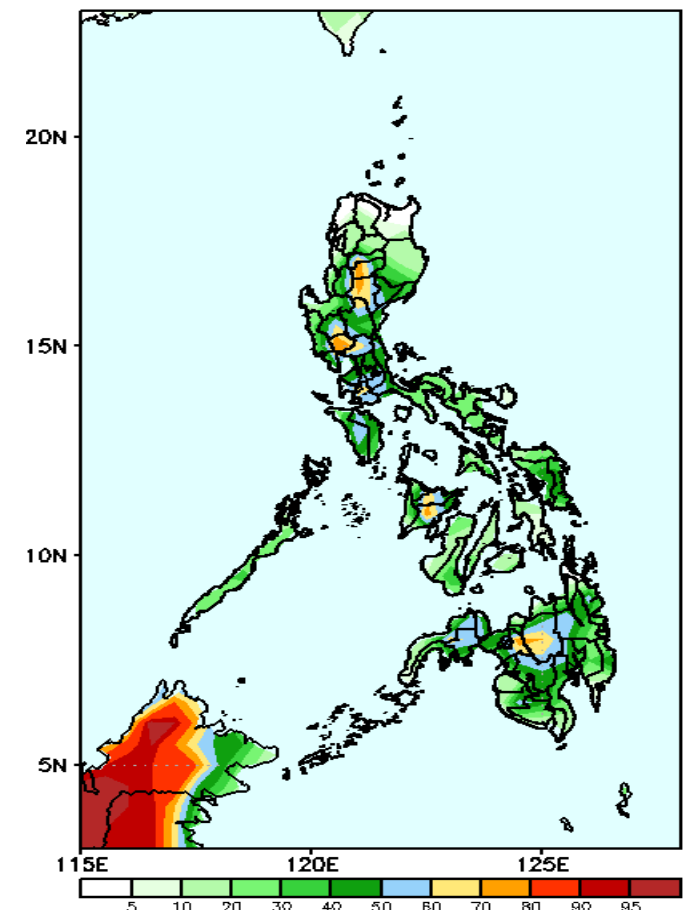
GEFS Week-1 Precip Anomaly  
Valid: 20210927 - 20211003



GEFS Week-1 Exceedance Prob. > 25mm  
Valid: 20210927 - 20211003



GEFS Week-1 Exceedance Prob. > 50mm  
Valid: 20210927 - 20211003



Rainfall deficit of 40-150mm is expected in most parts of the country (especially in Cordillera Region & Mindoro) during the forecast period.

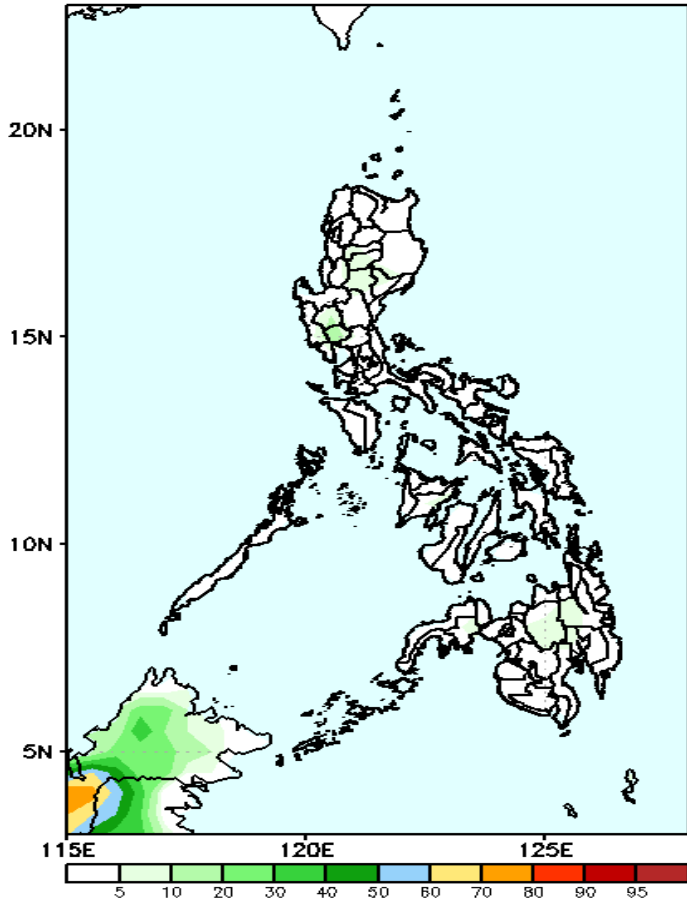
High probability of rainfall to exceed 25mm in most parts of the country except in Ilocos Norte, Apayao & Cagayan during the forecast period.

Less probability of rainfall to exceed 50mm in most parts of the country except in Kalinga, Mt. Province, eastern Panay & Bukidnon during the forecast period.

# Exceedance Probability > 100/150/200 mm

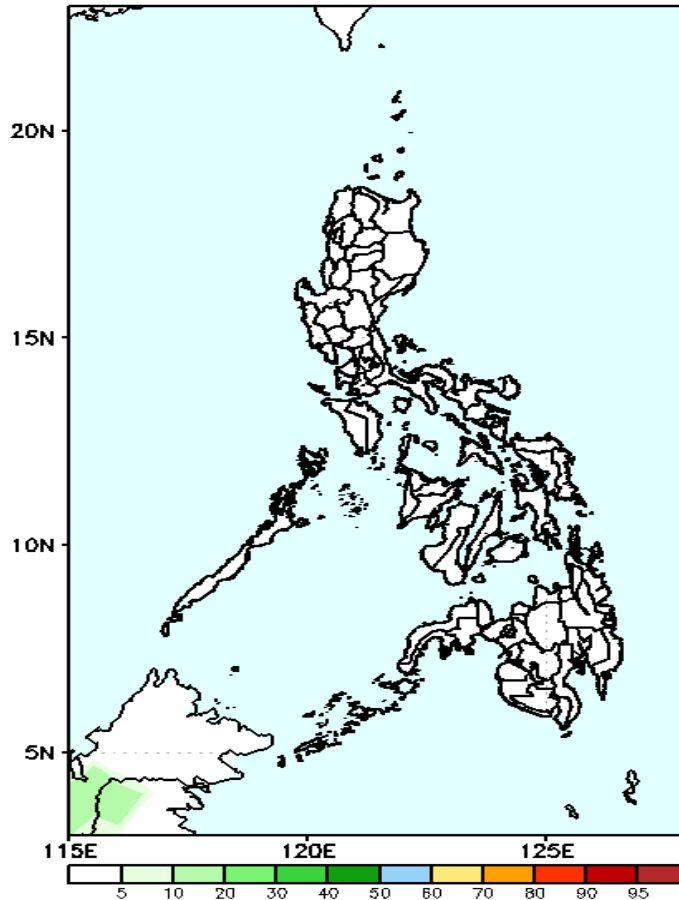
## Week 1: Sep 27- Oct 03, 2021

GEFS Week-1 Exceedance Prob. > 100mm  
Valid: 20210927 - 20211003



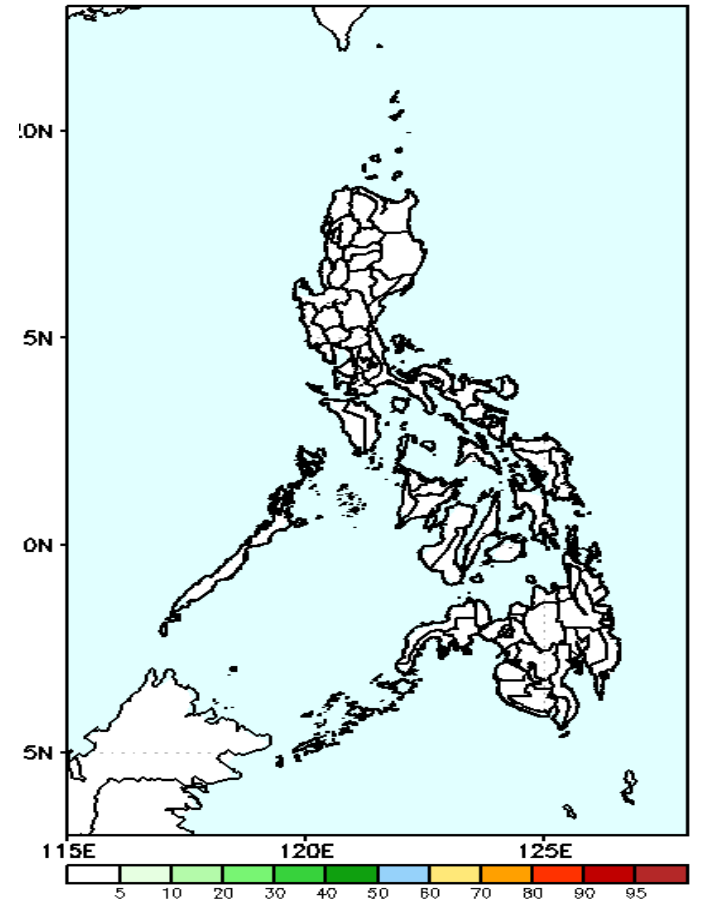
Less probability of rainfall to exceed 100mm in most parts of the country is expected during the forecast period.

GEFS Week-1 Exceedance Prob. > 150mm  
Valid: 20210927 - 20211003



Less probability of rainfall to exceed 150mm in most parts of the country is expected during the forecast period.

GEFS Week-1 Exceedance Prob. > 200mm  
Valid: 20210927 - 20211003



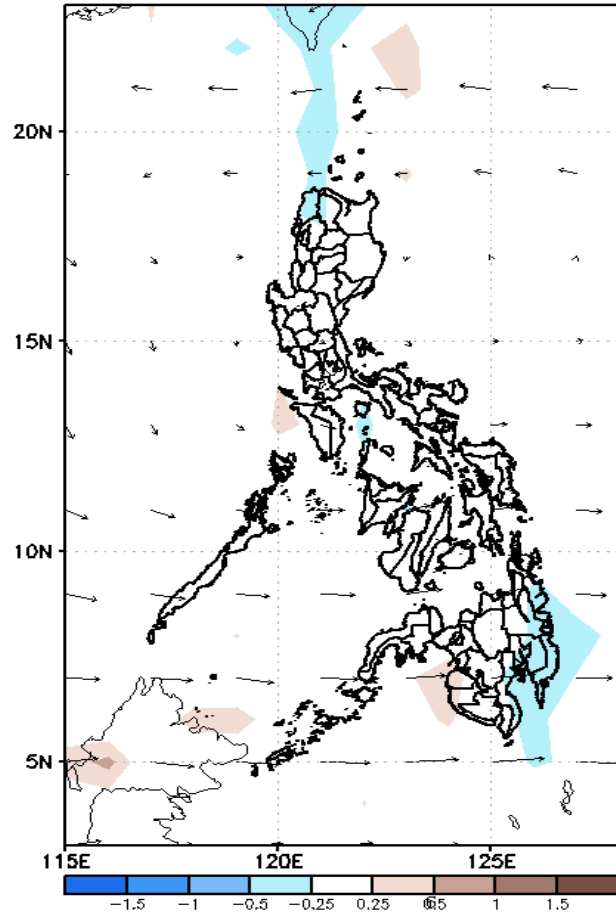
Less probability of rainfall to exceed 200mm in most parts of the country is expected during the forecast period.



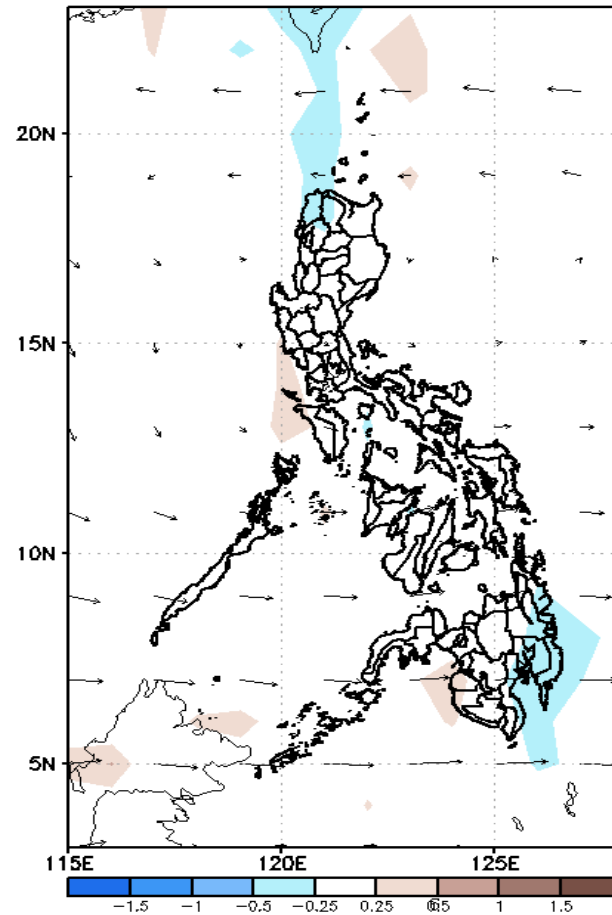
# GEFS Week-2 Forecasts: Divergence & Wind Anomaly

Week 2: Oct 04-10, 2021

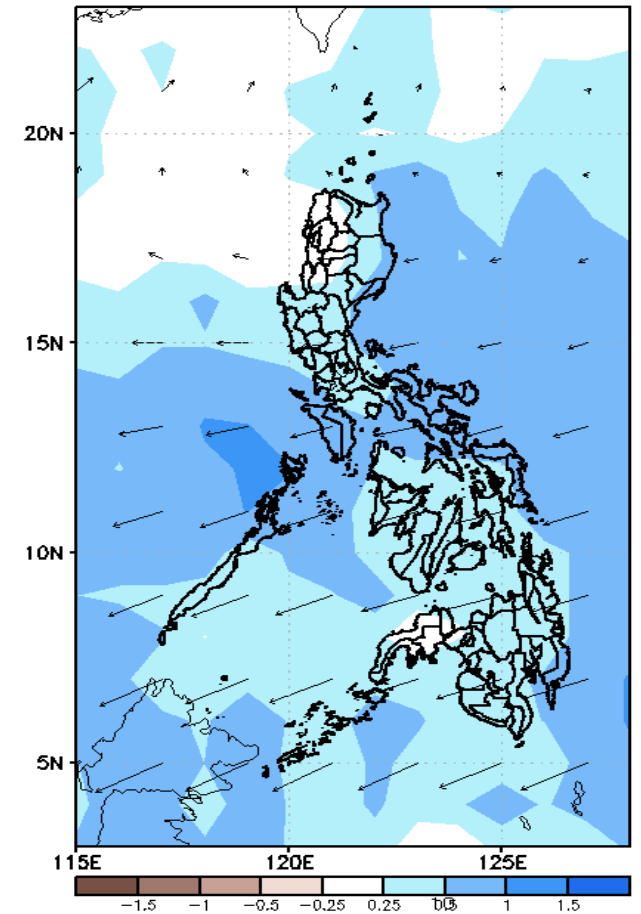
GEFS Week-2 850-hPa Divergence and Wind Anom  
Valid: 20211004 - 20211010



GEFS Week-2 700-hPa Divergence and Wind Anom  
Valid: 20211004 - 20211010



GEFS week-2 200-hPa Divergence and Wind Anom  
Valid: 20211004 - 20211010

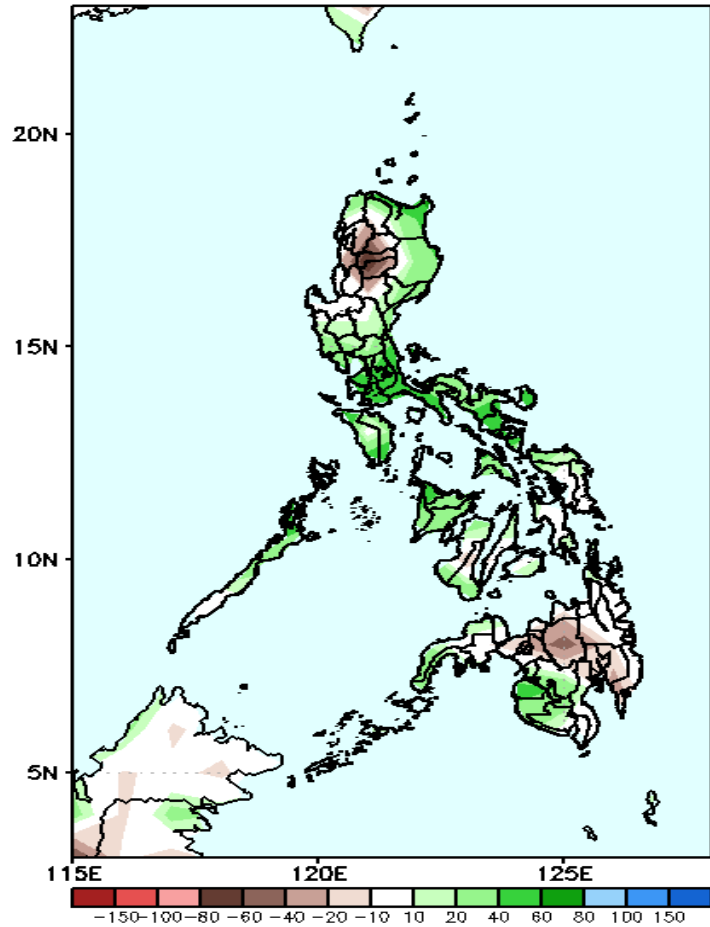


Upper and low level Divergence suggest high likelihood of precipitation in most parts of the country. Southwest monsoon affecting the western section of the country while Easterlies affecting the rest of the country attributing to light and moderate rains due to thunderstorms during the forecast.

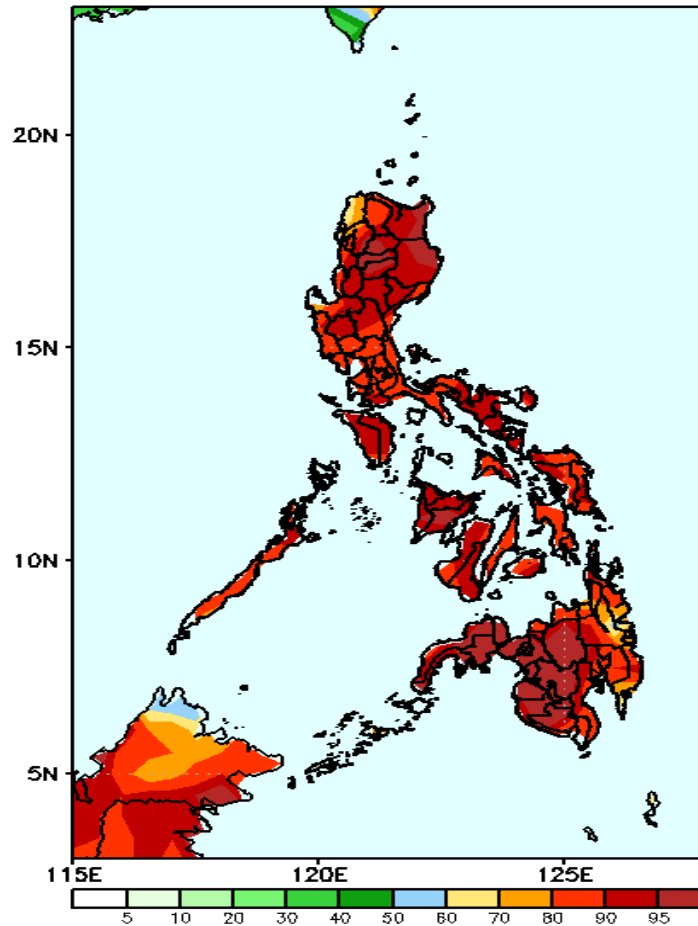
# Precipitation Anomaly and Exceedance Probability > 25/50 mm

## Week 2: Oct 04-10, 2021

GEFS Week-2 Precip Anomaly  
Valid: 20211004 - 20211010

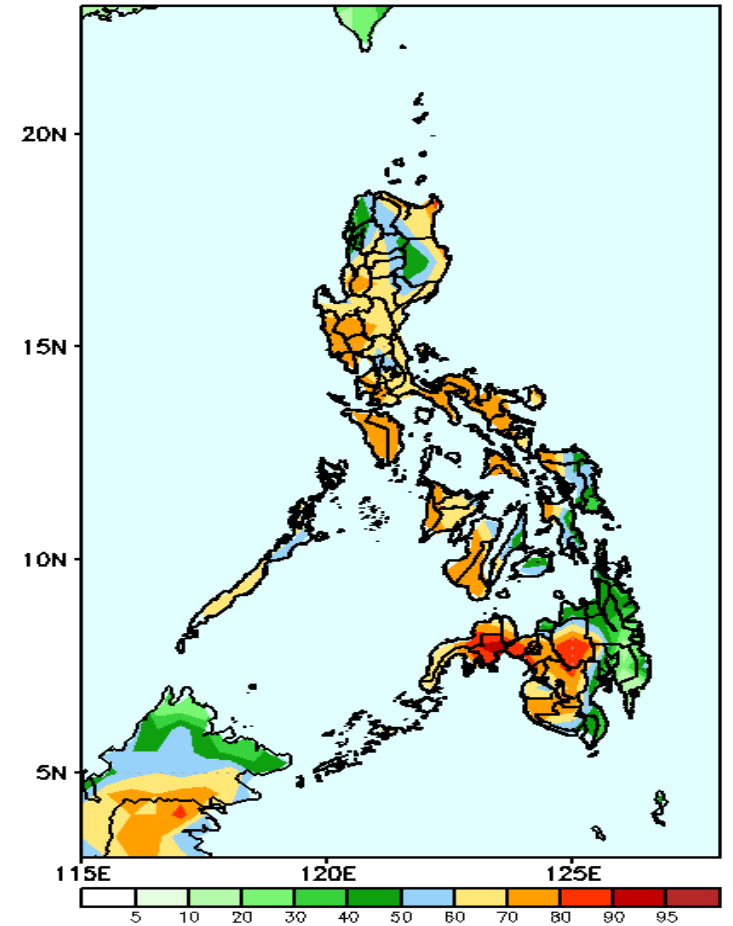


GEFS Week-2 Exceedance Prob. > 25mm  
Valid: 20211004 - 20211010



High probability of rainfall to exceed 25mm in most parts of the country during the forecast period

GEFS Week-2 Exceedance Prob. > 50mm  
Valid: 20211004 - 20211010



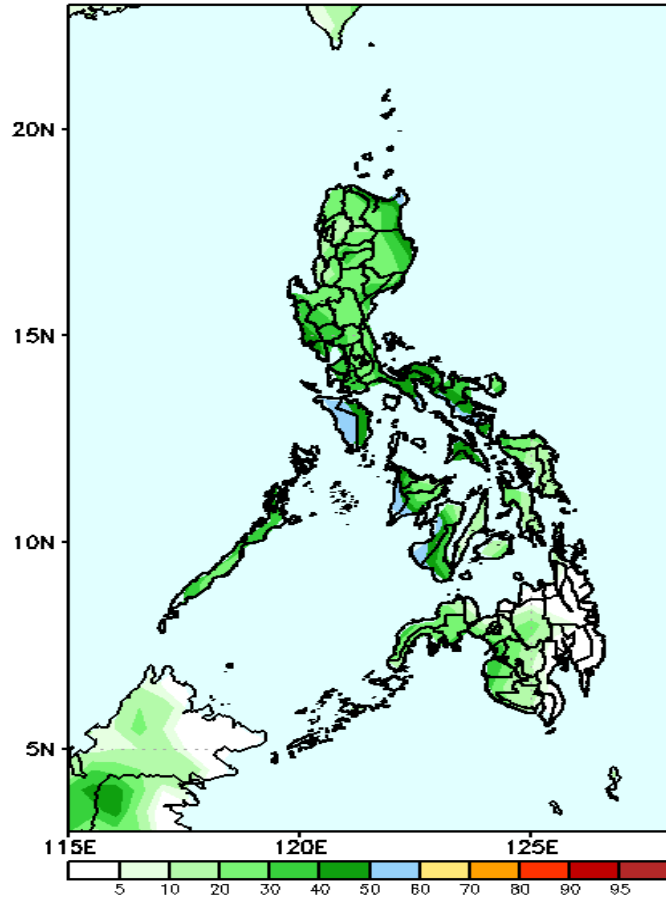
High probability of rainfall to exceed 50mm in most parts of the country except in Ilocos Norte & eastern section of Mindanao during the forecast period.



# Exceedance Probability > 100/150/200 mm

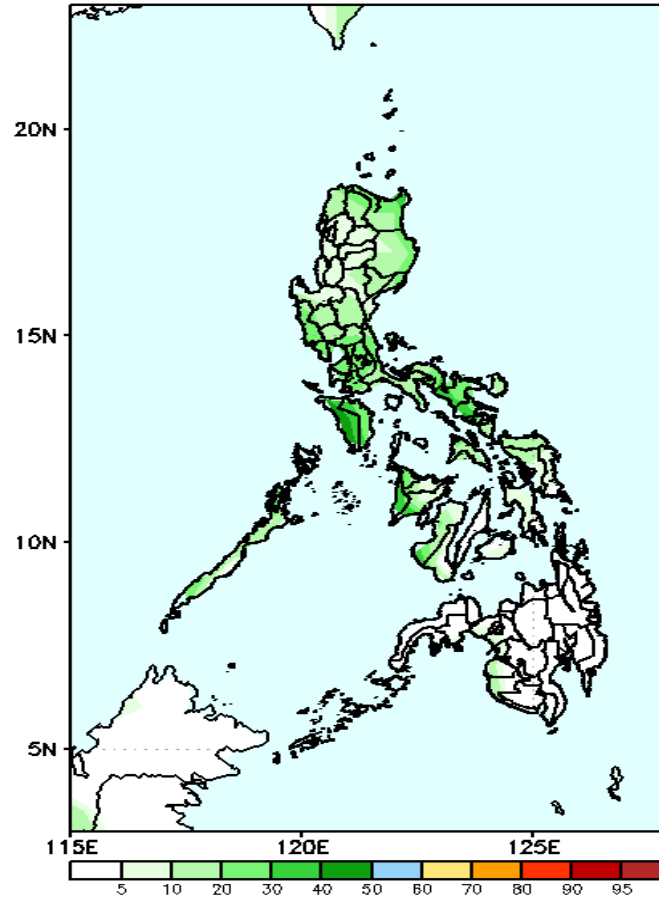
## Week 2: Oct 04-10, 2021

GEFS Week-2 Exceedance Prob. > 100mm  
Valid: 20211004 - 20211010



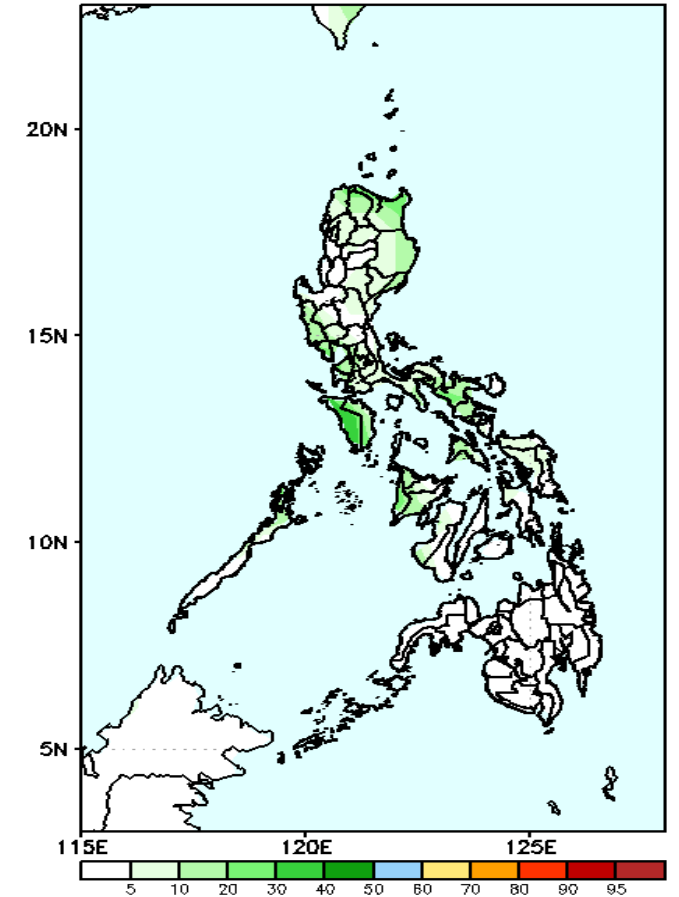
Less probability of rainfall to exceed 100mm in most parts of the country is expected during the forecast period.

GEFS Week-2 Exceedance Prob. > 150mm  
Valid: 20211004 - 20211010



Less probability of rainfall to exceed 150mm in most parts of the country is expected during the forecast period.

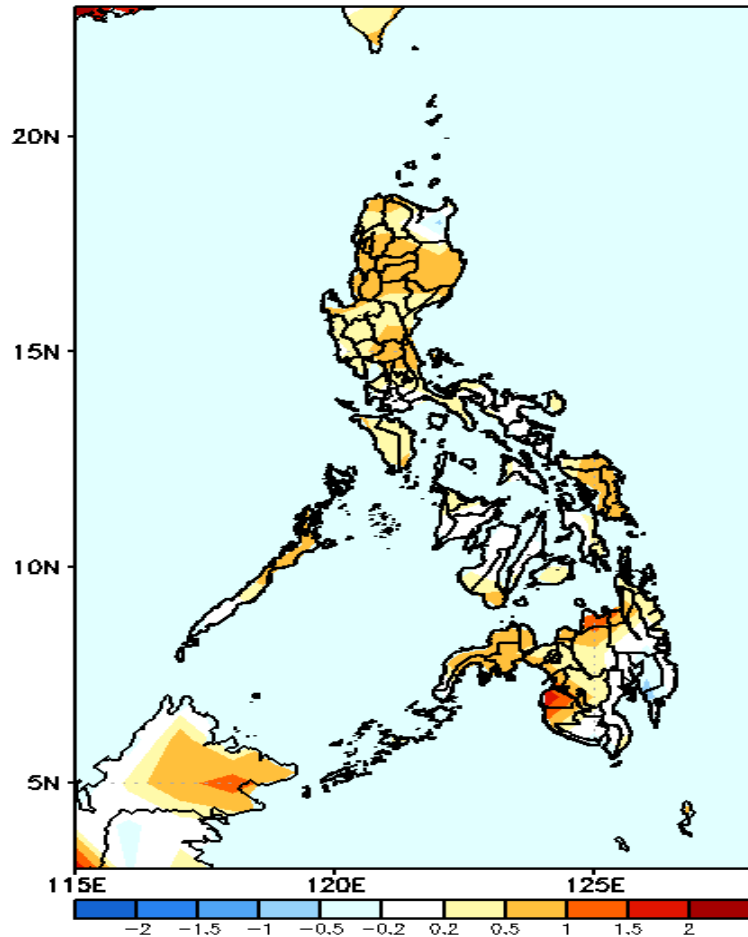
GEFS Week-2 Exceedance Prob. > 200mm  
Valid: 20211004 - 20211010



Less probability of rainfall to exceed 200mm in most parts of the country is expected during the forecast period.

# GEFS Week-1 & 2 Forecasts: T2m Anomaly

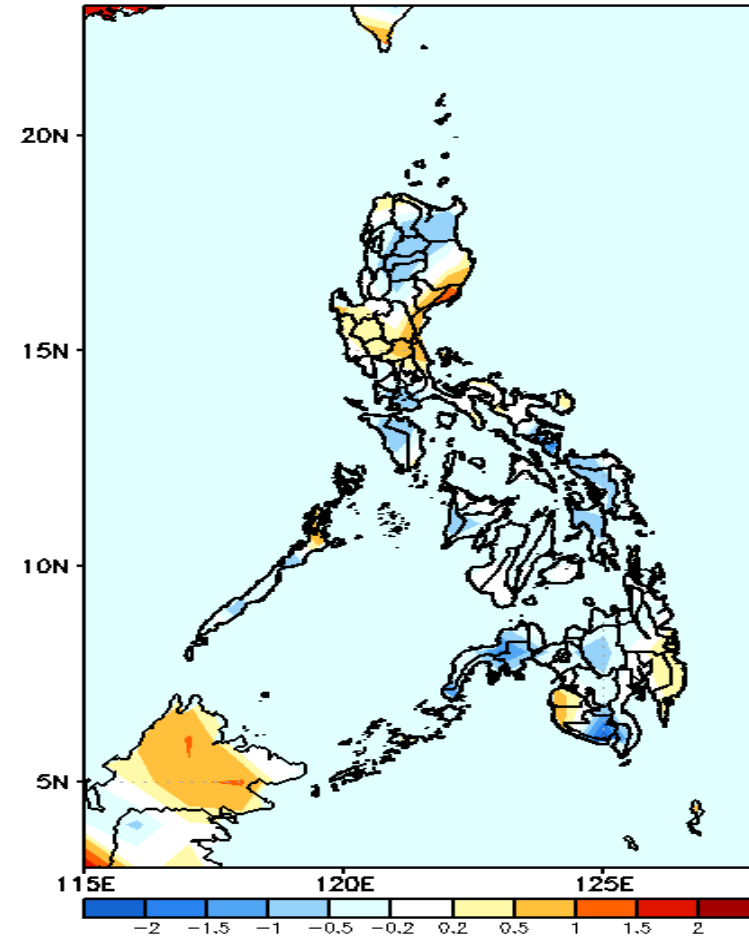
GEFS Week-1 T2m Anomaly  
Valid: 20210927 - 20211003



## 2m Temperature Week 1: Sep 27- Oct 03, 2021

Slightly warmer to warmer than average surface air temperature will likely experience in most parts of the country during the forecast period.

GEFS Week-2 T2m Anomaly  
Valid: 20211004 - 20211010



## 2m Temperature Week 2: Oct 04-10, 2021

Average to slightly cooler than average surface air temperature will likely experience in most parts of the country except in eastern Isabela, Quirino, Central Luzon, Maguindanao, Sultan Kudarat and southeastern Mindanao where slightly warmer to warmer than average temperature is expected.